

How to use DDNS

- * DDNS function is available from V1.30 firmware version of DVR.(4ch,8ch,16ch)
Please update DVR with V1.30 if DVR firmware version is under V1.30.
- * DDNS function using Remote Viewer is available from version 1. 10. 12. 13.
If your Remote Viewer is under this version, please contact your vendor.
- * First, you need to register your DVR info on DDNS Web-server.

A. Registration DVR at Internet Browser (DDNS Web-server)

1. Please access www.j2kip.com and click Register to register Member ID.

Member Login

This website was created to provide a dynamic domain name system (DDNS) that allows DVR Systems to operate without a static IP from an Internet provider. This has been created exclusively for use with the Argus line of products. Complete the registration process to add your DVR to the system and enjoy the many benefits of DDNS.

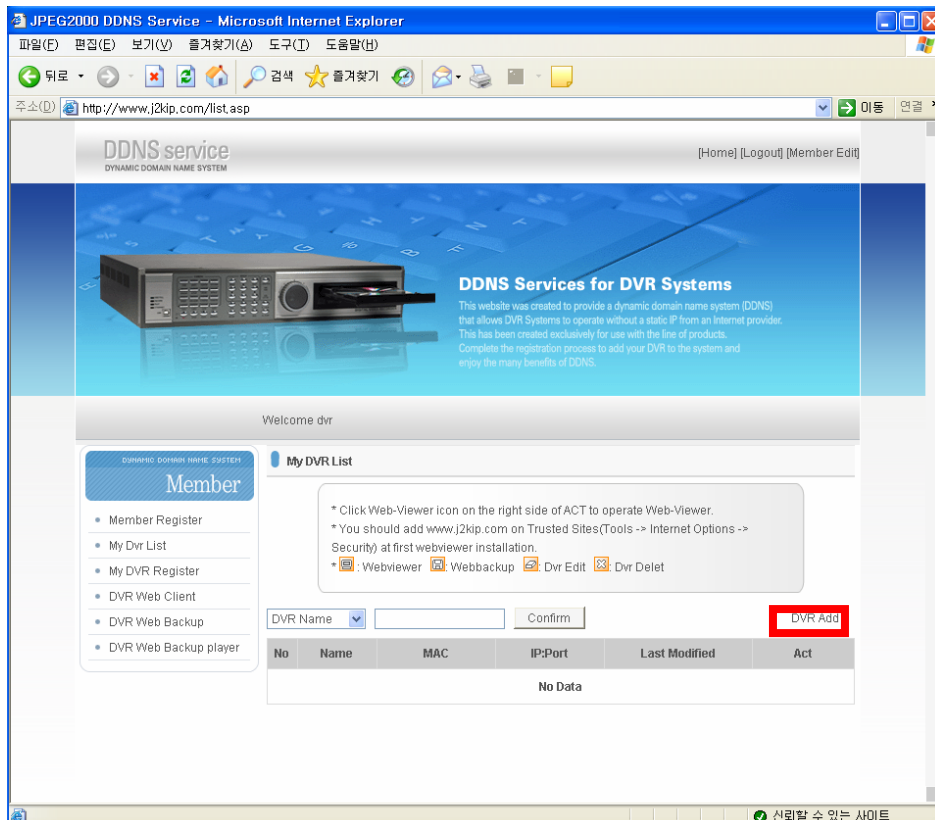
Member ID:
Password:

Member Register > New user

* ID and Password must be three characters or more
* We use User Email address to send information(User ID and Password) about your account.

Member Id:
User Email:
User Password:
Confirm Password:

2. Please click DVR Add to register DVR.



3. Please click Confirm after inputting DVR information.

My DVR Register

* Mac Address should be listed correctly without dash "-".
* Mac Address already listed can not be registered again.

DVR Name	4J-NTSC
MAC Address	000AA200F01F *without dash "-"
IP Address	220.70.26.51
IP Port	210

Confirm

4. Now, DVR is listed on DDNS web server.

The screenshot shows a web browser window titled "JPEG2000 DDNS Service - Microsoft Internet Explorer". The address bar shows "http://www.j2kip.com/list.asp". The page content includes a header for "DDNS service" and a main banner for "DDNS Services for DVR Systems". Below the banner, there is a "Member" sidebar with a "My DVR List" section. The "My DVR List" section contains a table with the following data:

No	Name	MAC	IP:Port	Last Modified	Act
1	dvr1	00-0A-A2-00-01-01	192.168.1.160:50000	2005-12-16 4:21:49	[Webviewer] [Webbackup] [Dvr Edit] [Dvr Delet]

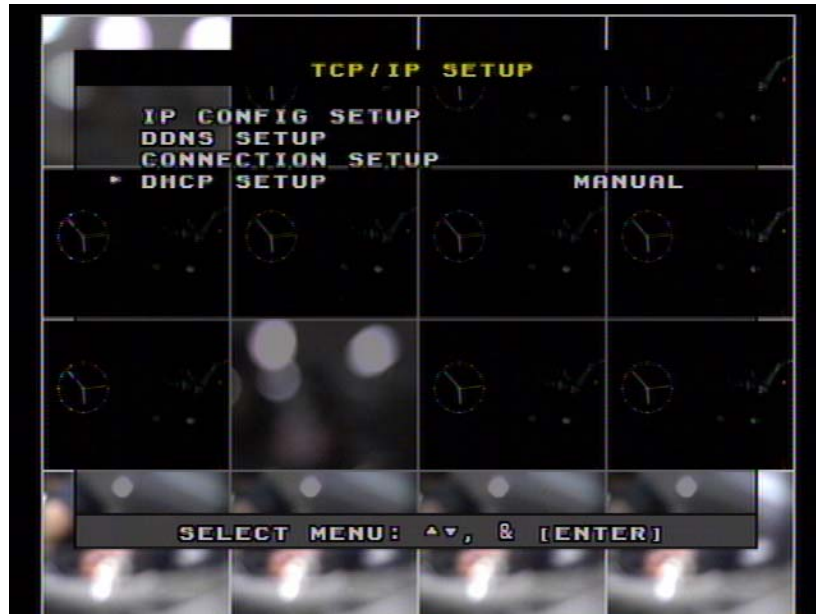
At the bottom of the page, there is a status bar that says "신뢰할 수 있는 사이트".

B. DVR

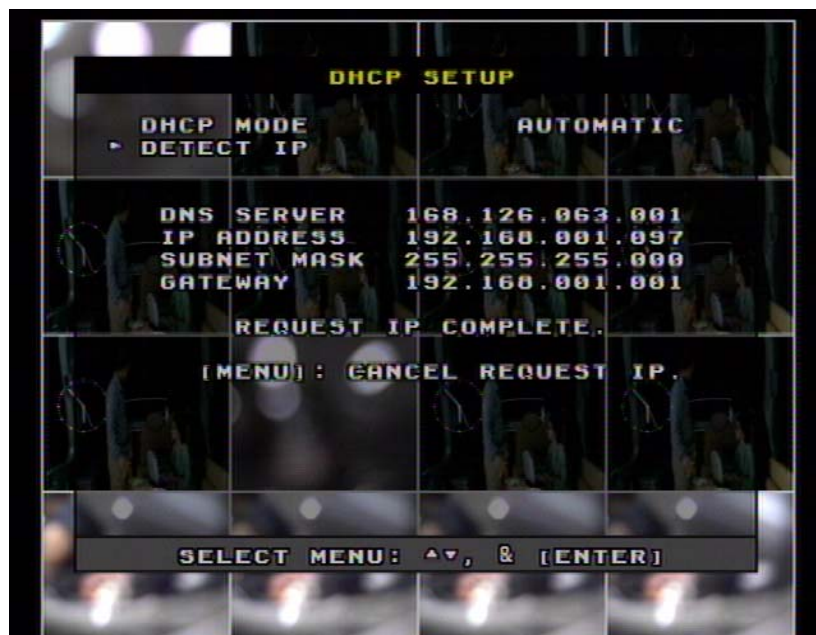
1. Go to MENU ⇒ External Device ⇒ TCP/IP Setup

2. Dynamic IP : Select AUTOMATIC at DHCP Setup

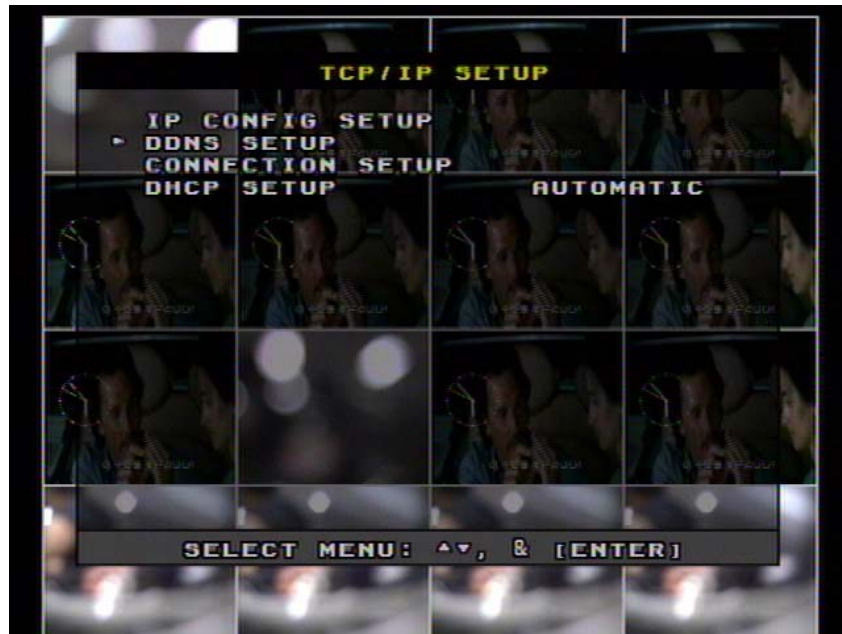
Static IP : Select MANUAL and input IP/DNS information manually



3. In case of Dynamic IP, execute DETECT IP to get IP information.



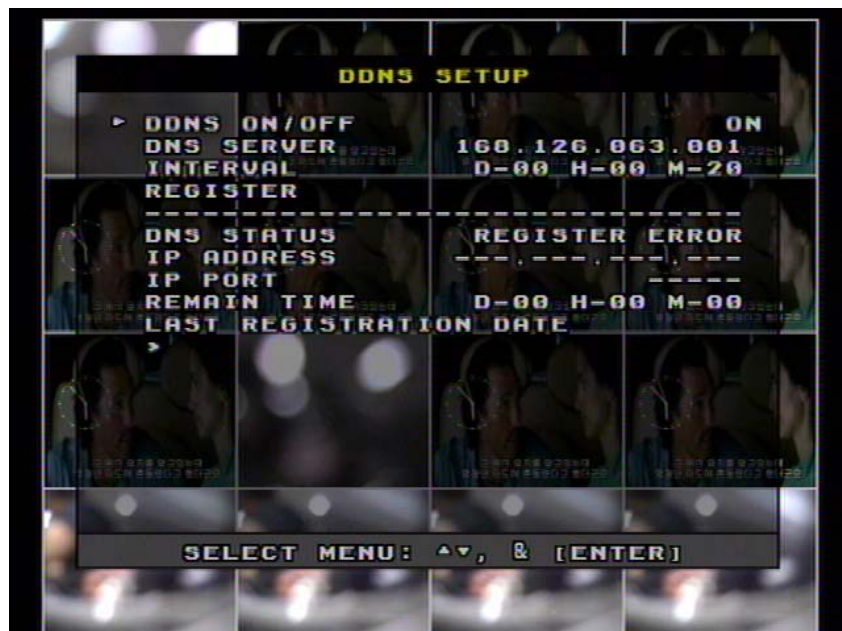
4. Select DDNS SETUP.



5. Set DDNS ON/OFF to **ON**.

DNS SERVER : In case of static IP, User should input DNS address manually.

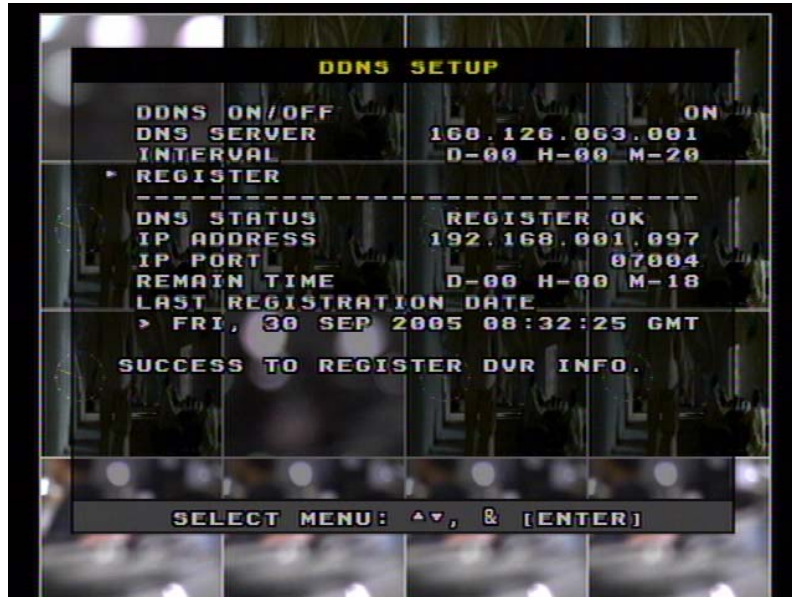
In case of dynamic IP, DNS address will be automatically assigned.



- Go down to REGISTER and push ENTER button to renew IP registered on DDNS SERVER.

(Interval means connection interval time between DVR and DDNS SERVER.)

D = Day, H = Hour, M = Minute

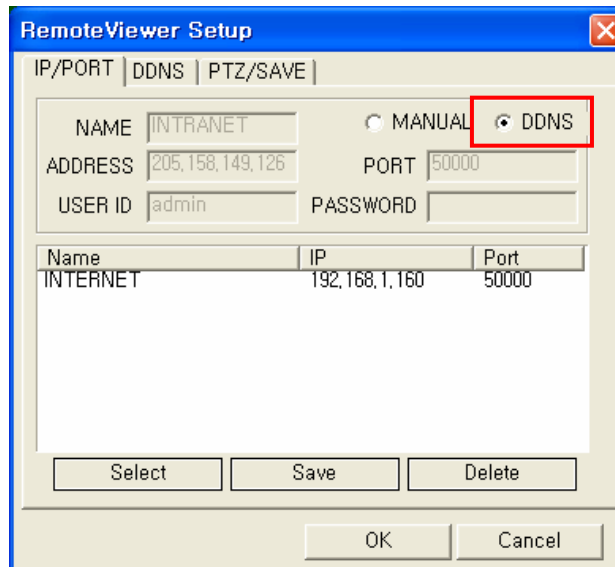


Now DDNS setup at DVR finished.

C. Remote Viewer Setting and Connection

1. Please install Remote Viewer program in SoftwareCD.(Software Version 1. 10. 12.13)

Execute Remote Viewer software and click SETTING on the right side.



The screenshot shows the 'RemoteViewer Setup' dialog box with the 'IP/PORT' tab selected. The 'DDNS' radio button is highlighted with a red box. The 'NAME' field contains 'INTRANET', 'ADDRESS' contains '205.158.149.126', 'PORT' contains '50000', and 'USER ID' contains 'admin'. A table below shows the current configuration:

Name	IP	Port
INTERNET	192.168.1.160	50000

Buttons at the bottom include 'Select', 'Save', 'Delete', 'OK', and 'Cancel'.

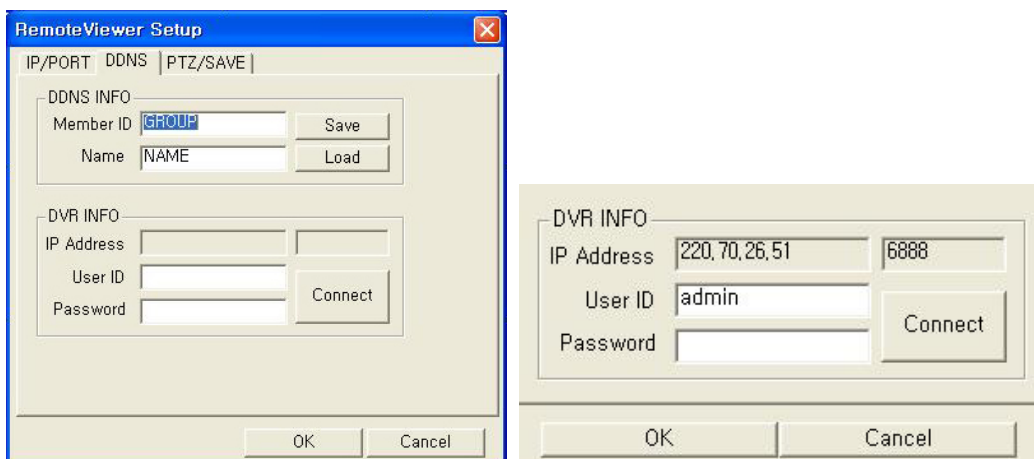
2. Select radio button of DDNS and choose tab of DDNS.

Input Member ID/Name as it is registered on DDNS Server, click Connect button.

Then, you can have IP address and port number as follows.

Member ID : Member ID registered on DDNS SERVER

Name : DVR Name registered on DDNS SERVER



The first screenshot shows the 'RemoteViewer Setup' dialog box with the 'DDNS' tab selected. The 'DDNS INFO' section has 'Member ID' set to 'GROUP' and 'Name' set to 'NAME'. The 'DVR INFO' section has empty fields for 'IP Address', 'User ID', and 'Password', with a 'Connect' button.

The second screenshot shows the same dialog box with the 'DVR INFO' section filled in: 'IP Address' is '220.70.26.51', 'User ID' is 'admin', and 'Password' is empty. The 'Connect' button is visible.

3. Click CONNECT to access as follows.

